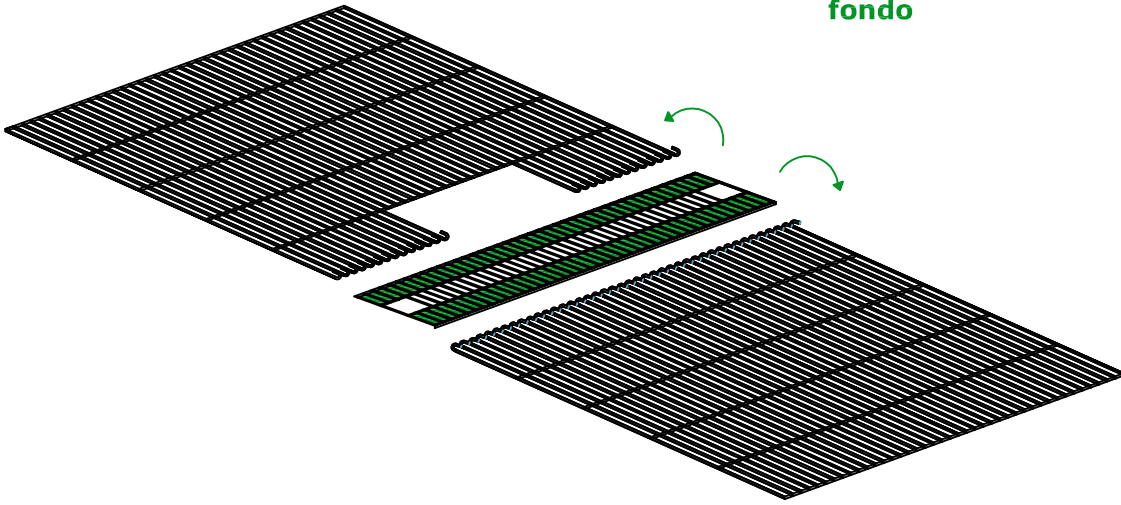


## PIANO DI MONTAGGIO

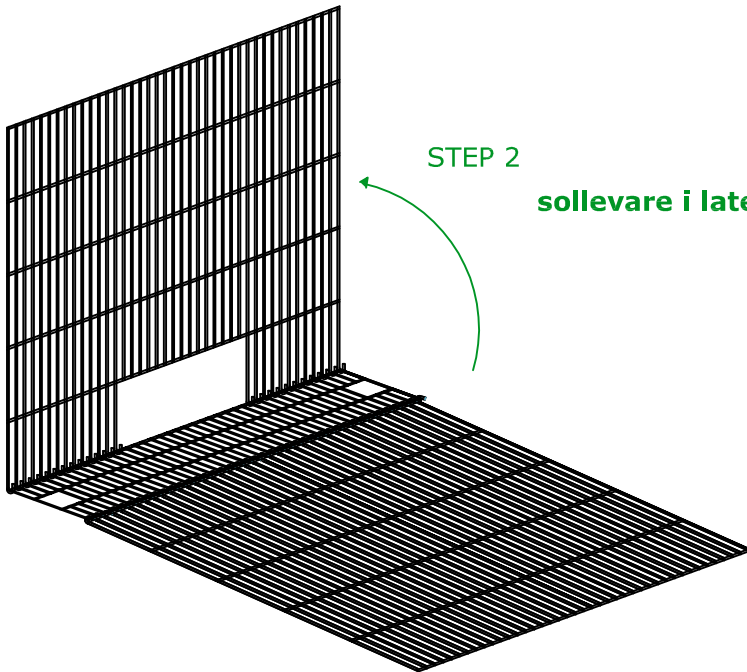
STEP 1

agganciare i laterali al fondo

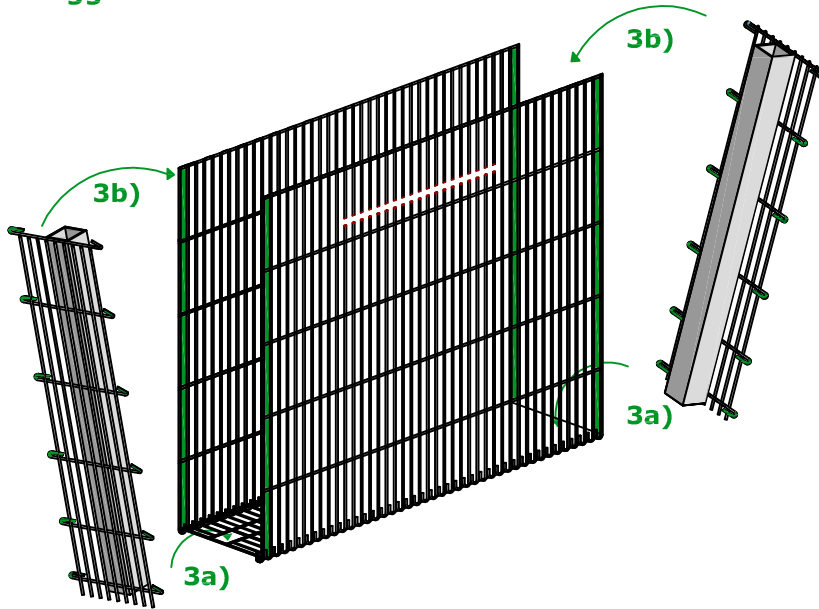


STEP 2

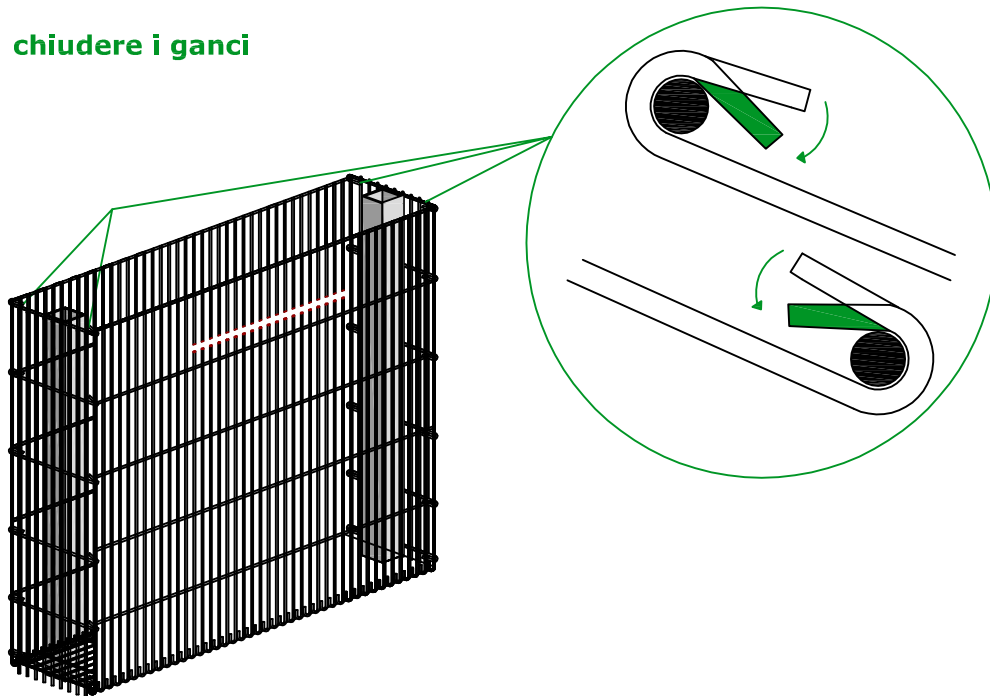
sollevare i laterali lunghi



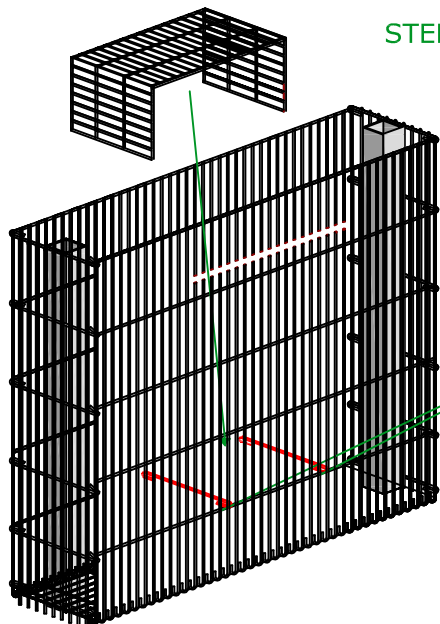
**STEP 3**    **agganciare le teste ai fianchi**



**STEP 4**    **chiudere i ganci**



**STEP 6**    **inserire la protezione della pompa**



**STEP 5**  
**inserire i due tiranti interni di supporto**

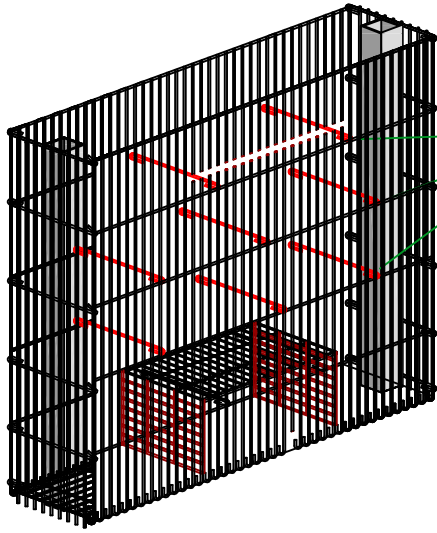


**FONCANE - WASSERFALL -  
FOUNCAIN - FONTAINE - FUENTE**

**GARDEN  
LINE**

STEP 7

inserire i tiranti interni

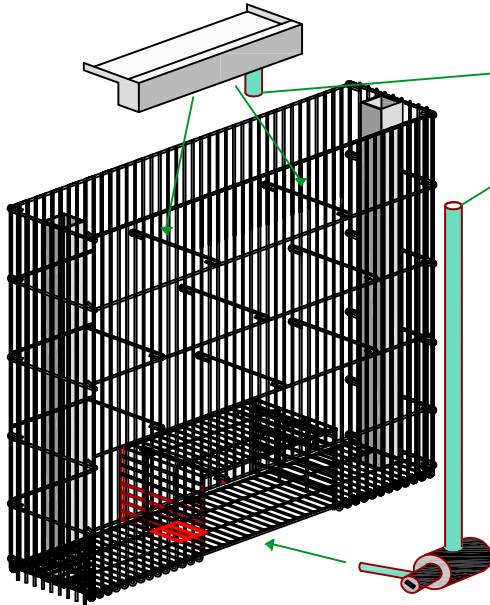


nr. 8

STEP 9 inserire la cascata nell'alloggiamento/taglio appoggiandola sui tiranti

STEP 10

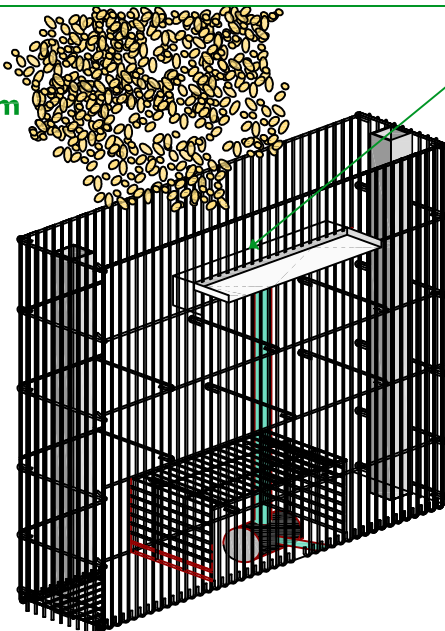
collegare la pompa alla vasca



STEP 8

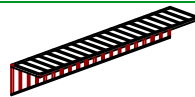
inserire la pompa dell'acqua

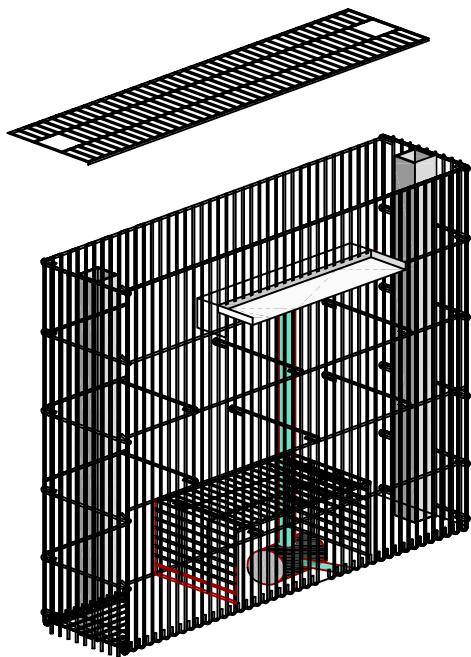
STEP 12  
riempimento con  
graniglia 30-50 mm  
oppure  
ciottoli 25/40 mm



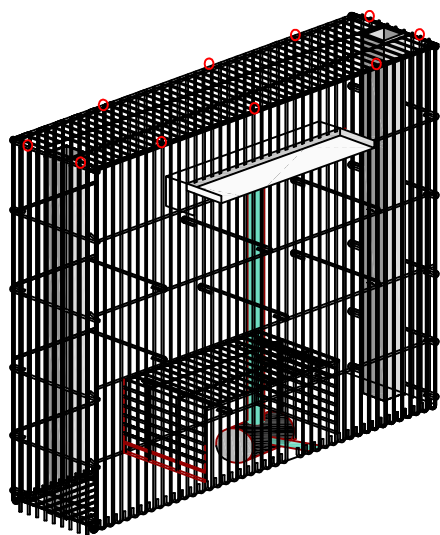
STEP 11

inserire la griglia di  
protezione  
della cascata





STEP 13  
applicare il coperchio



STEP 14  
fissaggio del coperchio  
tramite anelli di chiusura

o o

**GD GARDEN LINE**  
**FONCANE - WASSERFALL -**  
**FONTAIN - FONCANE - FUENTE**